



A word from Johan

We're breaking out the champagne, with two great reasons to celebrate...

This month we're celebrating our 10 year anniversary! The Brisbane WGE office has been open since 2005, when we decided to meet strong demand for local engineering services. It's been an eventful decade- check out what's happened (and see what a decade has done to some of our long-serving team) on the back page.

Another big win is the announcement that WGE has been accredited as an Aon Hewitt Best Employer- for the 4th year in a row. We're very proud of this amazing accomplishment as it's a true reflection of our focus on people and culture.

This unique culture impacts our clients and projects as well. As a firm we hire people not only for their technical capability, but equally as importantly, for their passion and cultural fit.

We're engineers with personality. This creates great client relationships with high levels of engagement, good communication and ultimately results in excellent outcomes.

Johan Sadie

Brisbane Office Manager, Director
P: 07 3811 4500

In this issue

- 1 A word from Johan
- 1 QLD's retail development trend
- 3 Feature projects
- 5 Current project snapshots
- 6 A decade in the life of WGE



QLD's retail development trend

Queensland is experiencing an abundance of retail developments in locations varying from its rural towns to coastal towns and city locations.

Developers have identified investment opportunities in locations where the local citizens have shown strong interest in having a central retail hub. Retail centres are seen as a way to build and support local communities and it's exciting to see an array of outstanding shopping centres being developed.

Continued on page 2

Industry trends



QLD's retail development trend

Continued from page 1

Building a successful shopping centre that will attract the best tenants and high traffic is a complex job, requiring experience in:

- Staging development in order to ensure trade and “feet through the door” for existing retailers
- Planning for tenancy mix, operational flexibility and future proofing
- Building services and utility infrastructure

WGE's retail team are experts at new and redeveloped retail centres, having worked on numerous projects with leading developers including AMP, Colonial First State, Westfield and Stockland. We're currently involved in major QLD retail projects including:

- Stockland Gladstone West Mall redevelopment
- QIC Robina Town Centre
- Willows Shopping Centre
- Stockland Kensington
- Stockland Jimboomba



Willows Shopping Town redevelopment

Willows Shopping Town is a major regional shopping centre located in the south-west of Townsville's CBD. The project included refurbishment of the existing Willows shopping centre and food court, and development of a new mall to increase the centre's GLA by 12,500m² to 37,448m². An energy simulation exercise was carried out to determine the most cost effective insulation and glazing systems in compliance with the Building Council of Australia.

Stockland Gladstone West Mall redevelopment

Stockland Gladstone is the only major shopping centre in the region, located 500km north of Brisbane. WGE is providing electrical and mechanical services for the planned \$160 million upgrade of the West Mall complex. The staged development will see existing majors Kmart, Coles and Target moved to new sites without halting regular trading. The centre's retail space will be increased to approximately 45,000 m² to include a food court, restaurant precinct and 101 specialty stores.

Stockland Jimboomba Village Shopping Centre

Jimboomba Village is located 50km south of Brisbane in “one of the strongest performing growth corridors” according to Stockland¹. Adjacent to the existing shopping centre, the brand new greenfield retail development is planned to include 22,000m² of floor space incorporating the 2 majors, Woolworths and Big W, as well as a new food court and specialty shops. WGE is providing electrical services on the new development, including power, lighting, communications, dry fire and site infrastructure.



¹ <http://www.stockland.com.au/assets/crs2012/property-portfolio-2012.pdf>

Feature projects



Robina Town Centre

WGE client: QIC

Project architect: The Buchan Group

WGE role: Electrical, Mechanical, Sustainability and Vertical Transportation

The redevelopment and expansion of the southern end of the Robina Town Centre (approximately 22,000m²) incorporates a number of specialty stores and restaurants.

The new Coles store is one of the first in Queensland to be designed to the Coles “Next Generation” scheme.

The project was completed over three stages. WGE’s involvement included mechanical and electrical specific Revit design of the expansion including AC, ventilation layout and mall feature lighting.



Cambridge Residences

WGE client: Eastview (Qld) Pty Ltd

Project architect: TVS Architects

WGE role: Civil and Structural

Cambridge Residences at Laver Drive in Robina is a new master planned residential development incorporating 400 apartments across four modern towers. The residences will feature naturally ventilated corridors, large terraces, secure underground parking and lifestyle facilities including a pool, gym and landscaped gardens.

WGE has been involved at Cambridge Residences from DA approval through to detailed design with construction expected to commence in August. The project involved the structural design of the first 2 towers (being 6 and 9 storeys plus basement levels), extensive bulk earthworks on the sloping site, as well as foundation works, stormwater detention, flood compensatory earthworks and roadworks. Construction will be completed in two stages across the four towers.

Feature projects

Growler Airborne Electronic Attack Capability Facilities Project

WGE client: Lendlease

Project architect: BVN

WGE role: Electrical, Dry Fire, Mechanical and Vertical Transportation



Subject to Parliament approval the new Growler Airborne Electronic Attack Capability Aircraft (Growler) facilities will be operational in Australia in 2018 with RAAF Base Amberley in QLD as the main facility.

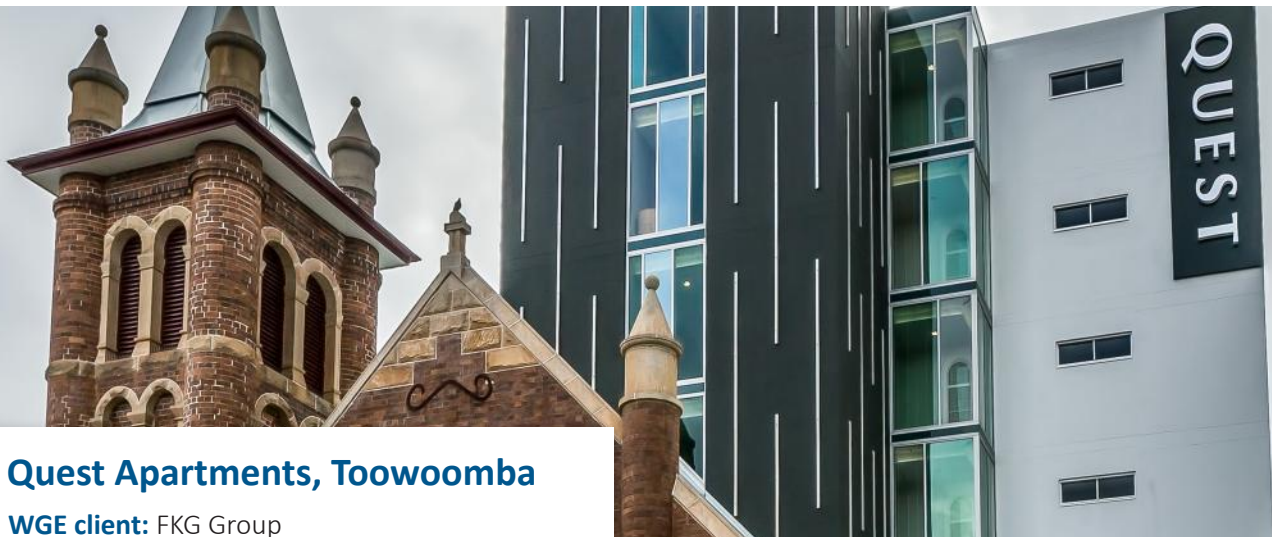
WGE's mechanical, vertical transportation, electrical and fire detection services are heavily involved in design documentation for the Defence bases in QLD and NT.

The high security facilities will include new squadron headquarters and hangars for the fleet of twelve EA-18G Growlers, as well as high-tech workshops, offices, car parks, flight simulator facilities and flight lines.

As Defence engineering consultants WGE operates within stringent security restrictions and the team is working closely with numerous key stakeholders to ensure the complex project is handled with appropriate sensitivity and adherence to Defence requirements.

The Growler facilities incorporate highly technical specifications in order to maintain the world-class electronic warfare system. The multi-stage project design plans are complex and integrate critical machinery and technology, including humidity and environmentally controlled aircraft workshops and the Tactical Operational Flight Trainer (TOFT) flight simulation.

Australia will be the only country in the world, other than the United States, operating Growler capability.



Quest Apartments, Toowoomba

WGE client: FKG Group

Project architect: FKG Group

WGE role: Electrical, Fire Protection, Hydraulics, Mechanical and Sustainability

Quest Apartments Toowoomba was a unique project completed by developer FKG Group and WGE in June 2015. The 74 room hotel offers a variety of superbly finished rooms

including 1 bed studios and 1 and 2 bed suites.

The project involved the partial demolition and restoration of the century-old Church of Christ, transforming it into a stunning lobby and entrance for the Quest Apartments. The church is no longer heritage listed but provided complexities when integrating the hotel services with existing works. The modern six-level apartments are built on a greenfield site at the rear of the church.

Current project snapshots



Regis, Chelmer

WGE client: Regis Aged Care

Project architect: PDT Architects

WGE role: Acoustics, Civil, Electrical, Fire Engineering, Hydraulic, Mechanical, Structural and Sustainability services



Eagle Farm Racecourse Pedestrian Tunnel

WGE client: Brisbane Racing Club / Racing Queensland

Project architect: Populus

WGE role: Electrical, Fire Engineering, Hydraulic and Mechanical services

Photo courtesy of Populus.



Caboolture Hospital - 32 bed Ward Refurbishment

WGE client: Queensland Health

Project architect: Peddle Thorp

WGE role: Electrical, Fire Engineering, Fire Protection, Hydraulic and Mechanical services



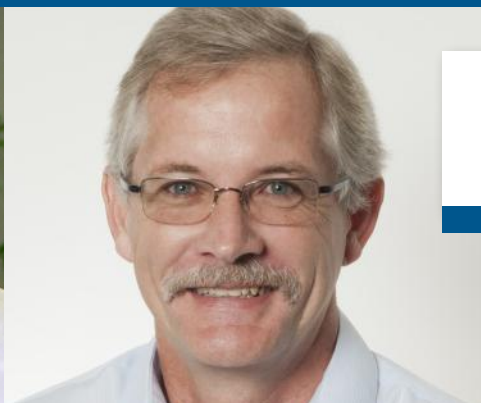
Belmont Shooting Range

WGE client: Department of State Development, Infrastructure and Planning (DSDIP)

Project architect: Mode Design

WGE role: Civil, Electrical, Fire Engineering, Hydraulic, Mechanical, Structural and Sustainability services

10 year anniversary



Brisbane Office Manager Johan Sadie in 2005 & 2015
- same moustache, different colour!

Check out what's happened to
our team in the last 10 years!

2015

Acoustics section is opened in
Brisbane.

At June 2015 the office is at 44
people, with the team growing
by over 25% in the last 12
months!

2015 - did you know the hard
working team goes through a
whopping 900 Nespresso.
capsules a week?

2014

Nigel Cooper is proud to be
promoted to Mechanical
Section Manager.

2013

Ashely Holm is promoted to
Electrical Section Manager.

2012

Martin O'Connor, Structural
Section Manager, joins the WGE
Brisbane team.

2010

Brisbane office won the Sunshine
Coast Hospital project worth
\$2 billion.

The Structural section is introduced
in Brisbane.

2008

WGE Brisbane's Civil section
is launched. Mike Prior
moves to Brisbane to head
up the new Civil team.

2007

The office rapidly expands
over 2 years to 19 people in
2007.

2005

WGE opens the Brisbane office
with Johan Sadie as the leader.
Brisbane Electrical is the first
section, with Hydraulics and
Mechanical a few months later.



2015



2005

Check out the changes in Mike Prior,
Civil Section Manager, over 10 years.
2005 - chose to his shave head. 2015 -
that choice is taken away!



EOFY - 2015



EOFY - 2014



EOFY - 2012

10 amazing
years of
growth in
Brisbane



Sunshine Coast University Hospital

To us, it's more than just work

www.wge.com.au

Albany

T (08) 9842 3700

F (08) 9842 1340

Brisbane

T (07) 3811 4500

F (07) 3811 4600

Busselton

T (08) 9754 4244

F (08) 9754 4132

Darwin

T (08) 8992 9900

F (08) 6222 7100

Melbourne

T (03) 8554 7000

F (03) 8554 7100

Perth

T (08) 6222 7000

F (08) 6222 7100

Sydney

T (02) 8484 7000

F (02) 8484 7100